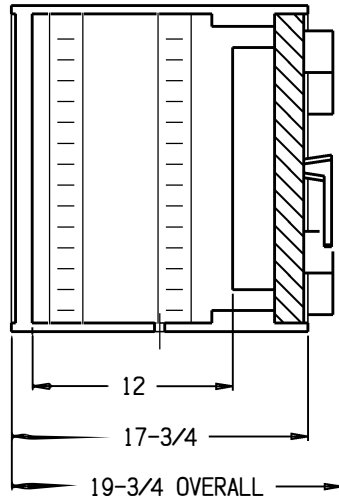




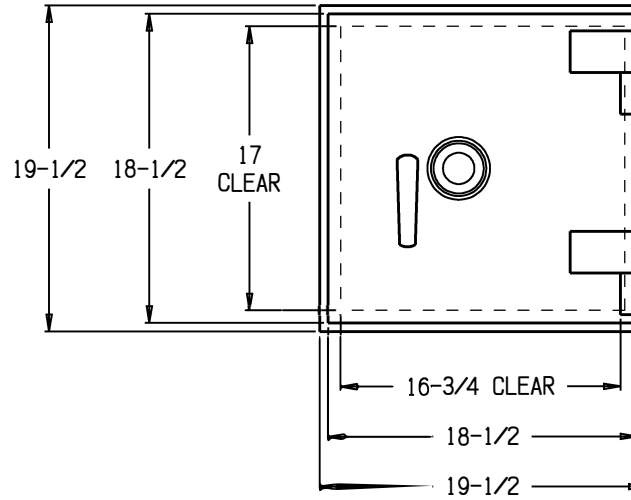
TOTAL Rx PROTECTION®

Scripps Safe Guardian Series® TL3019™

REVISIONS			
REV	DESCRIPTION	DATE	BY
A	UPDATED CONSTRUCTION	APR 19	



SECTION VIEW



FRONT VIEW

CUSTOMER SIGNATURE	
CLIENT NAME	
DATE	
COMPANY NAME	

**Guardian Series™**

1-844-4Safe-Rx

THIS IS A PROPRIETARY DRAWING AND MAY NOT BE COPIED IN ANY FASHION WITHOUT THE EXPRESS WRITTEN PERMISSION OF SCRIPPS SAFES.

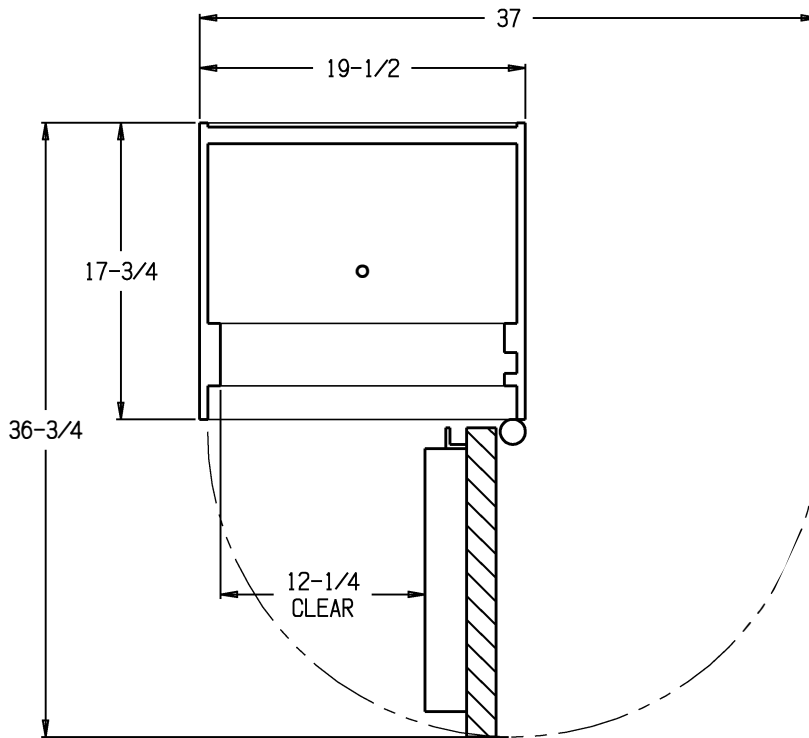
B	Q #		A
SCALE 1/8"	DO NOT SCALE DWG	SHEET 1 OF 2	



TOTAL Rx PROTECTION®

F A

REVISIONS			
REV	DESCRIPTION	DATE	BY
A	UPDATED CONSTRUCTION		



PLAN VIEW SECTION

SPECIFICATIONS

1. Safe, 19-1/2 H x 19-1/2 W x 17-3/4 D, Outside, UL Listed TL-30.
2. Chest, 18-1/2 H x 18-1/2 W x 12 D, Inside. Constructed of 1/2" Thick Steel with a 1" Thick Steel Back Plate for Stability.
3. Door, Clear Opening: 17 H x 16-3/4 (12-1/4 w/ Door @ 90°) W, Constructed of 1-3/4" Thick Steel. Equipped with a UL Listed Electronic Access Control System, Relocking Devices, and Two (2) 1" Dia. Chrome-Plated Locking Bolts. Lock Protected by a Drill-Resistant Hardplate.
4. Supplied with One (1) 9/16" Dia. Anchor Hole.
5. Approx Weight: 527 lbs.

CUSTOMER SIGNATURE	
DATE	
COMPANY NAME	

***Guardian Series™***

---

1-844-4Safe-Rx

THIS IS A PROPRIETARY DRAWING AND MAY NOT BE COPIED IN ANY FASHION WITHOUT THE EXPRESS WRITTEN PERMISSION OF SCRIPPS SAFES.